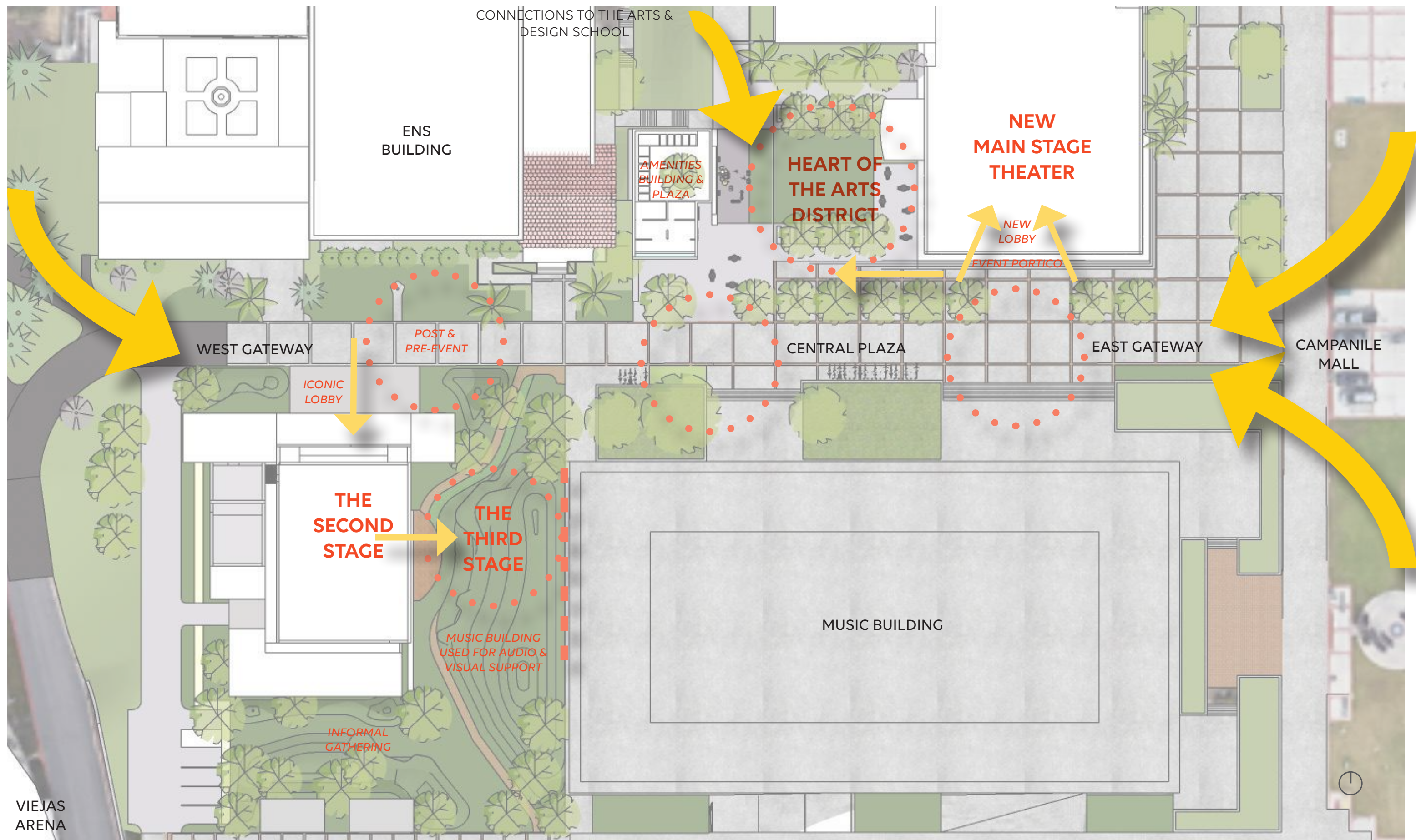


San Diego State University

PERFORMING ARTS

Performing Arts District





Second Stage



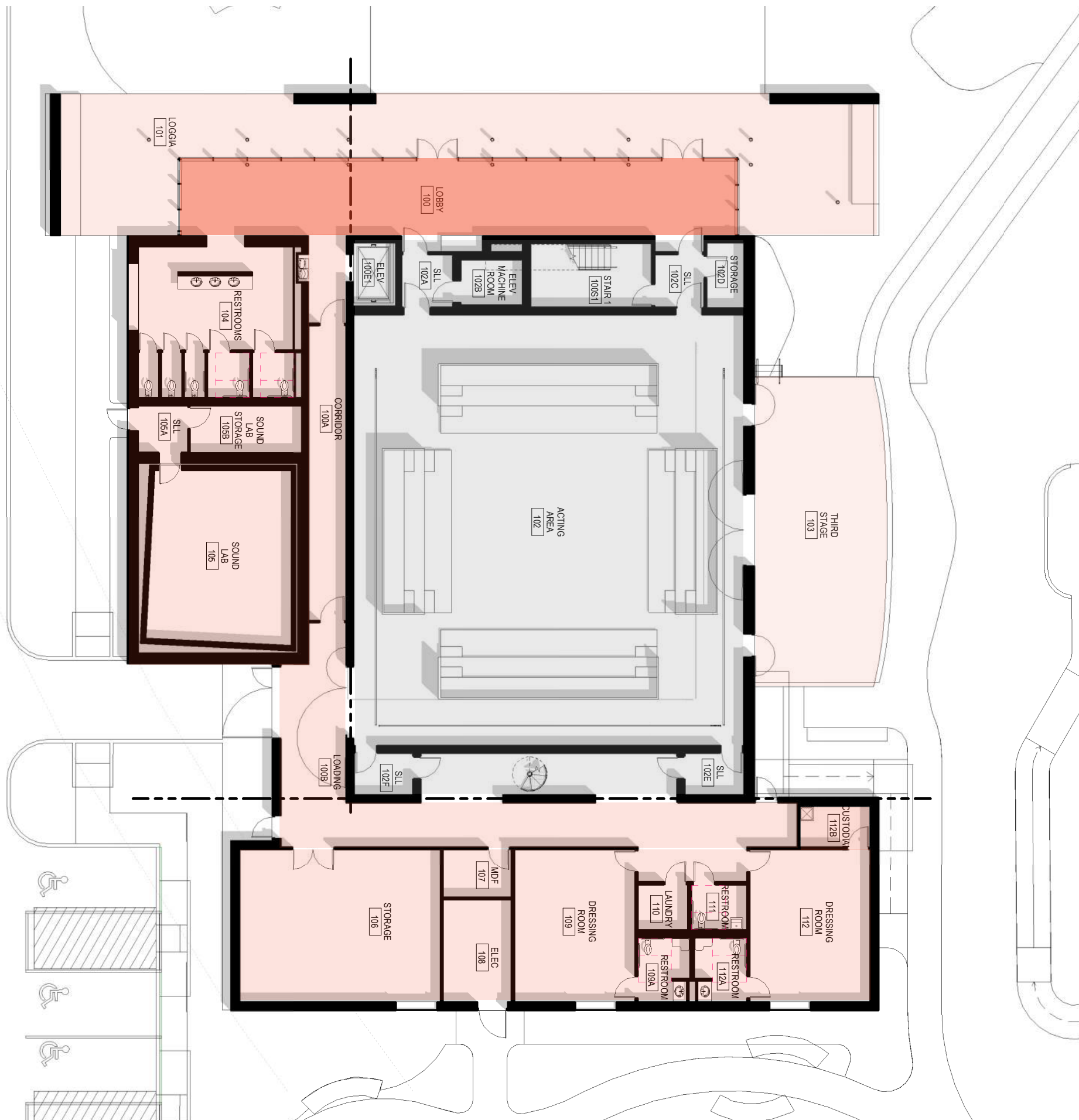
CONRAD PREBYS THEATRE

SAN DIEGO STATE UNIVERSITY





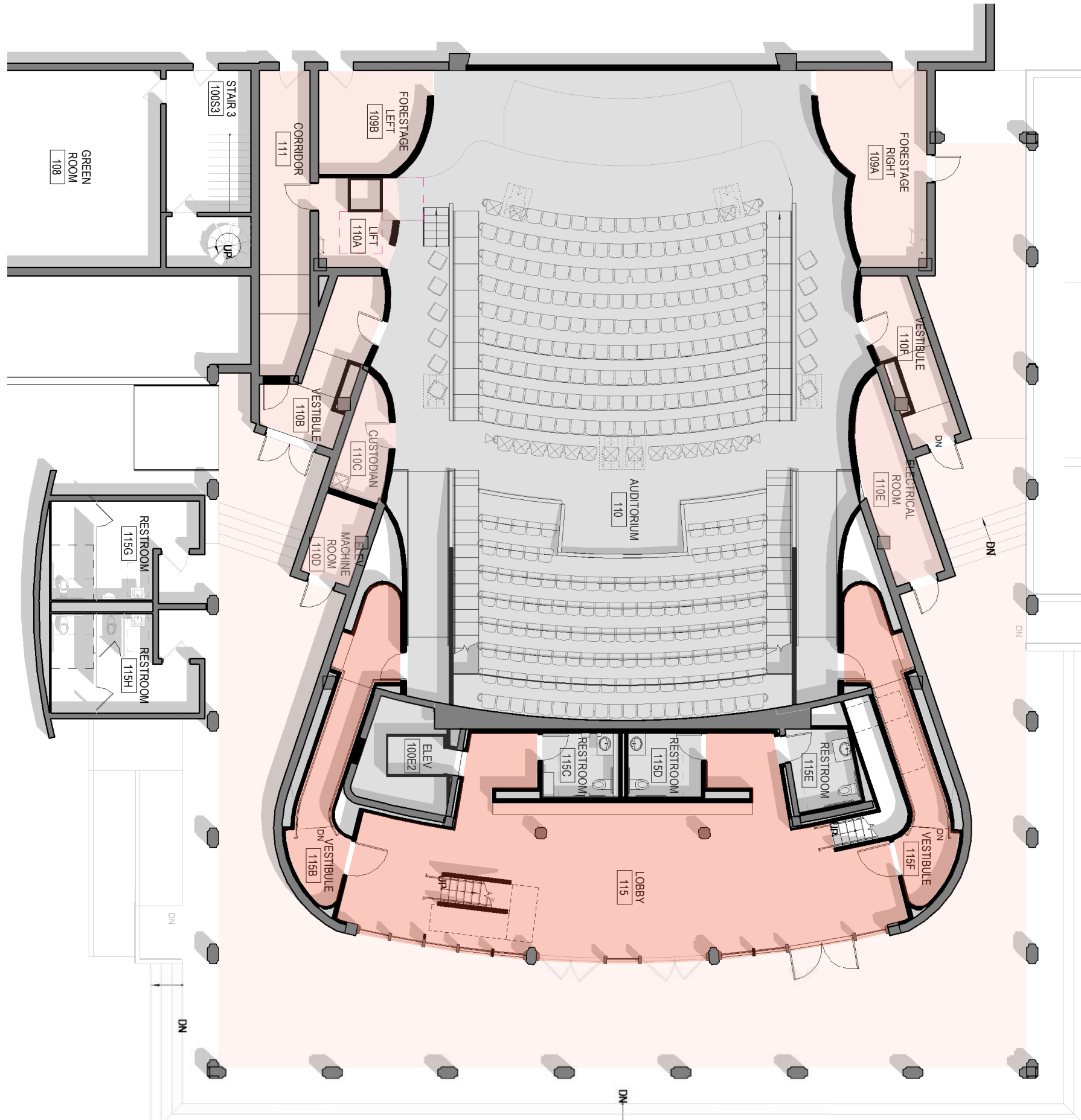




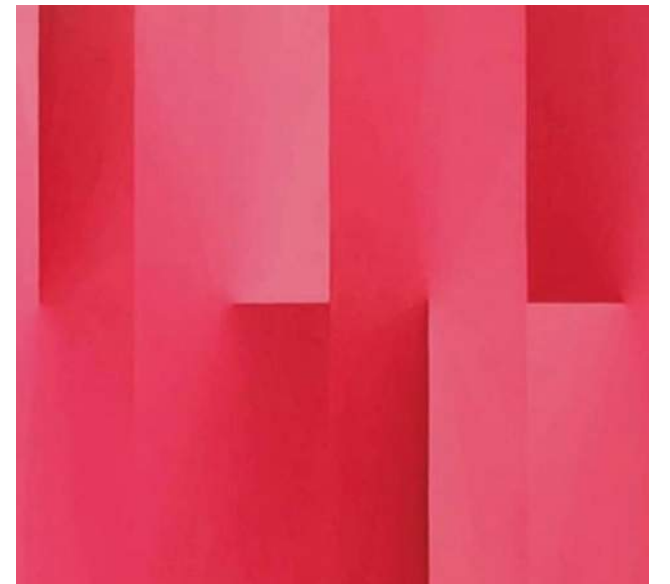
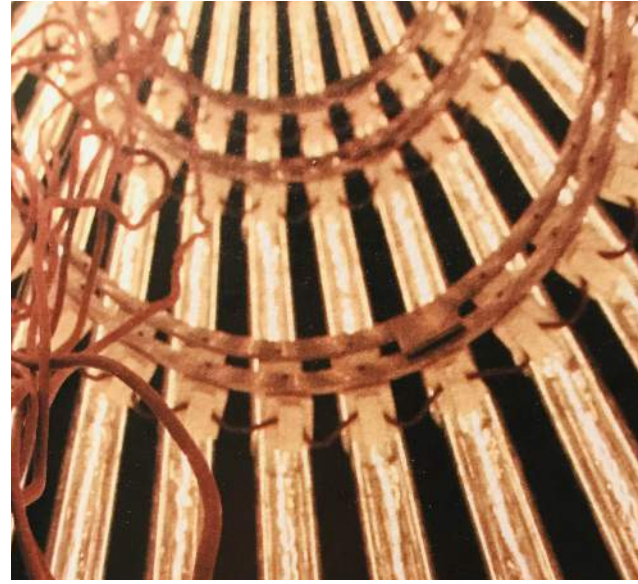
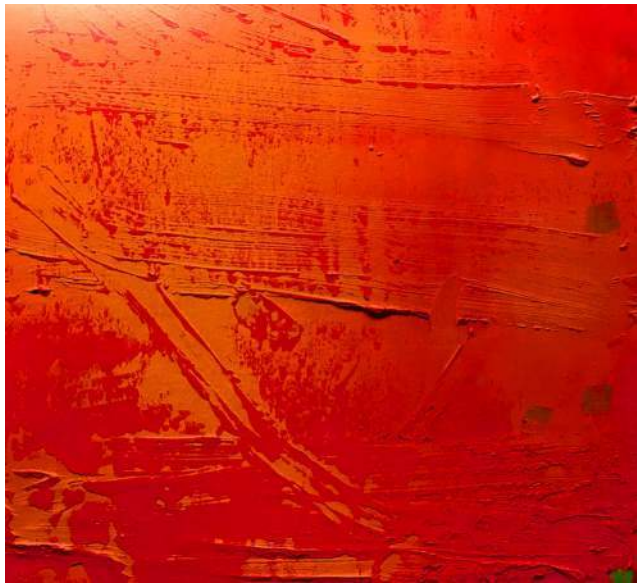


Main Stage

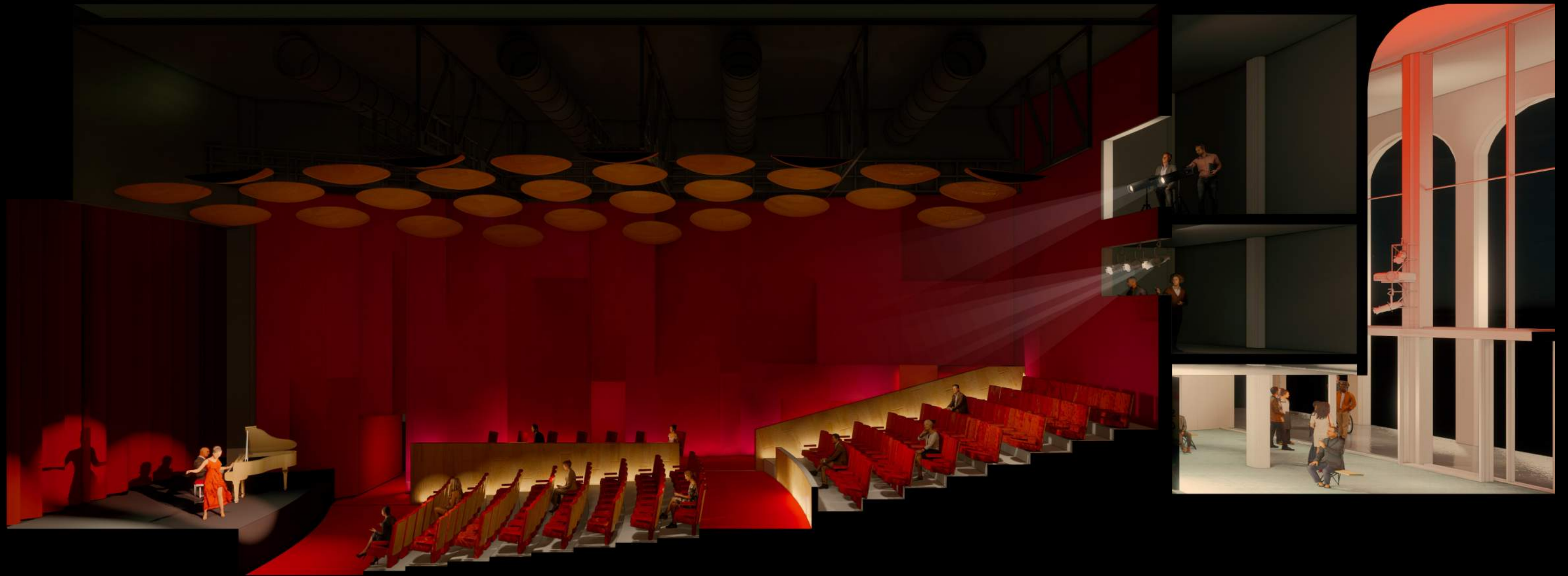












Amenities Pavilion







3D Projection Mapping performance during Fête des Lumières, Lyon, France (2010) Artists: 1024 architecture (Photos: Daniela Krautsack)

MOBILE PROJECTION LAB

- **PERFORM** – new kinds of artwork become possible when your canvas is a whole building.





<https://www.dataton.com/us/showcases/mapping-in-denmark>

MOBILE PROJECTION LAB

- **GATHER** – audiences grow through higher visibility of The School of Theatre, Television, and Film’s work everywhere on SDSU’s campus – and beyond.



MOBILE PROJECTION LAB

- **CREATE** – students learn the latest technology to innovate new possibilities in art.









CONRAD PREBYS THEATRE

SAN DIEGO STATE UNIVERSITY